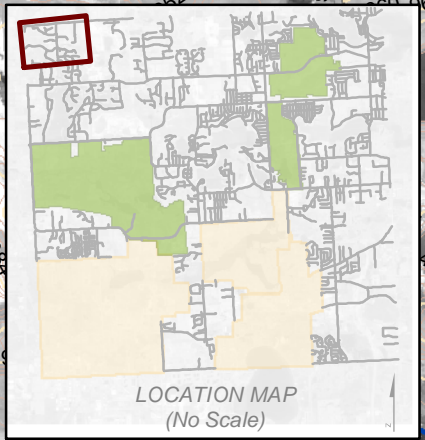
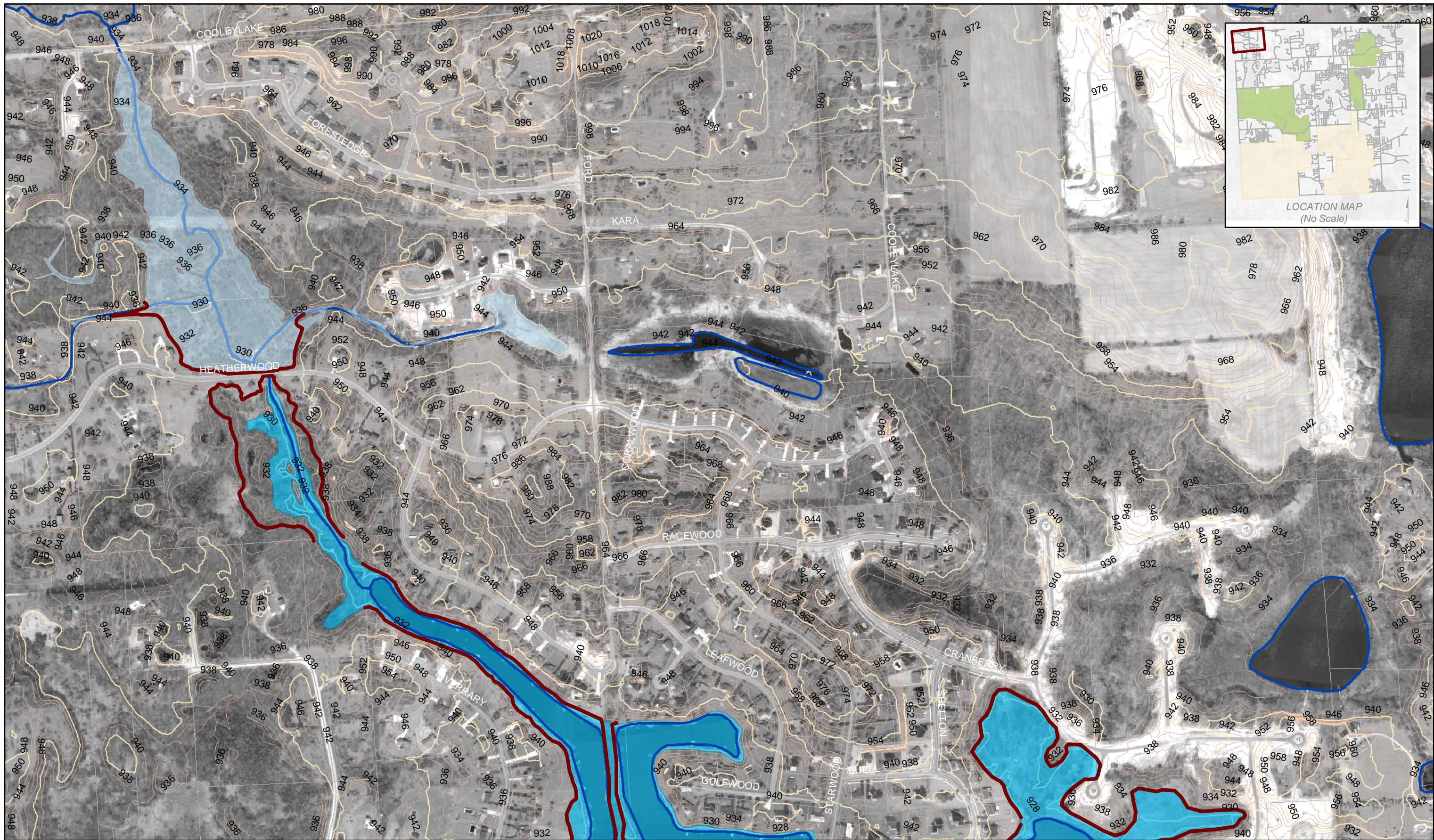


## Commerce Township 100-year Floodplain Map Sheet Index for 11" x 17" 500 Scale Sheets





**Legend**

	Calculated 100 year Floodplain (1)
	MDEQ Established Floodplains (2)
	Existing Study Cross Sections (FEMA) (3)
	Existing 100-year Floodplain (FEMA) (3)
	Commerce Streams
	Recreational Areas

- NOTES:**
1. The location of the approximate 100 year floodplain has been determined using HEC-RAS, HEC-HMS and ArcView GIS software.
  2. In some limited areas, the 100 year floodplain has been established by the MDEQ. These areas are generally associated with subdivision plats.
  3. Some areas of the Township have been mapped by FEMA. These elevation have been plotted on 2' contours supplied by Oakland County.



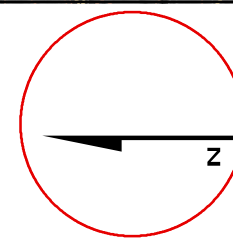
Commerce Township Storm Water Master Plan: Exhibit F1  
 100-year Floodplain Map  
 Teeple Creek Drain (1" = 500')



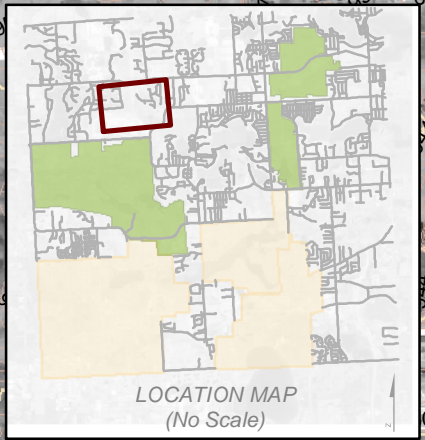
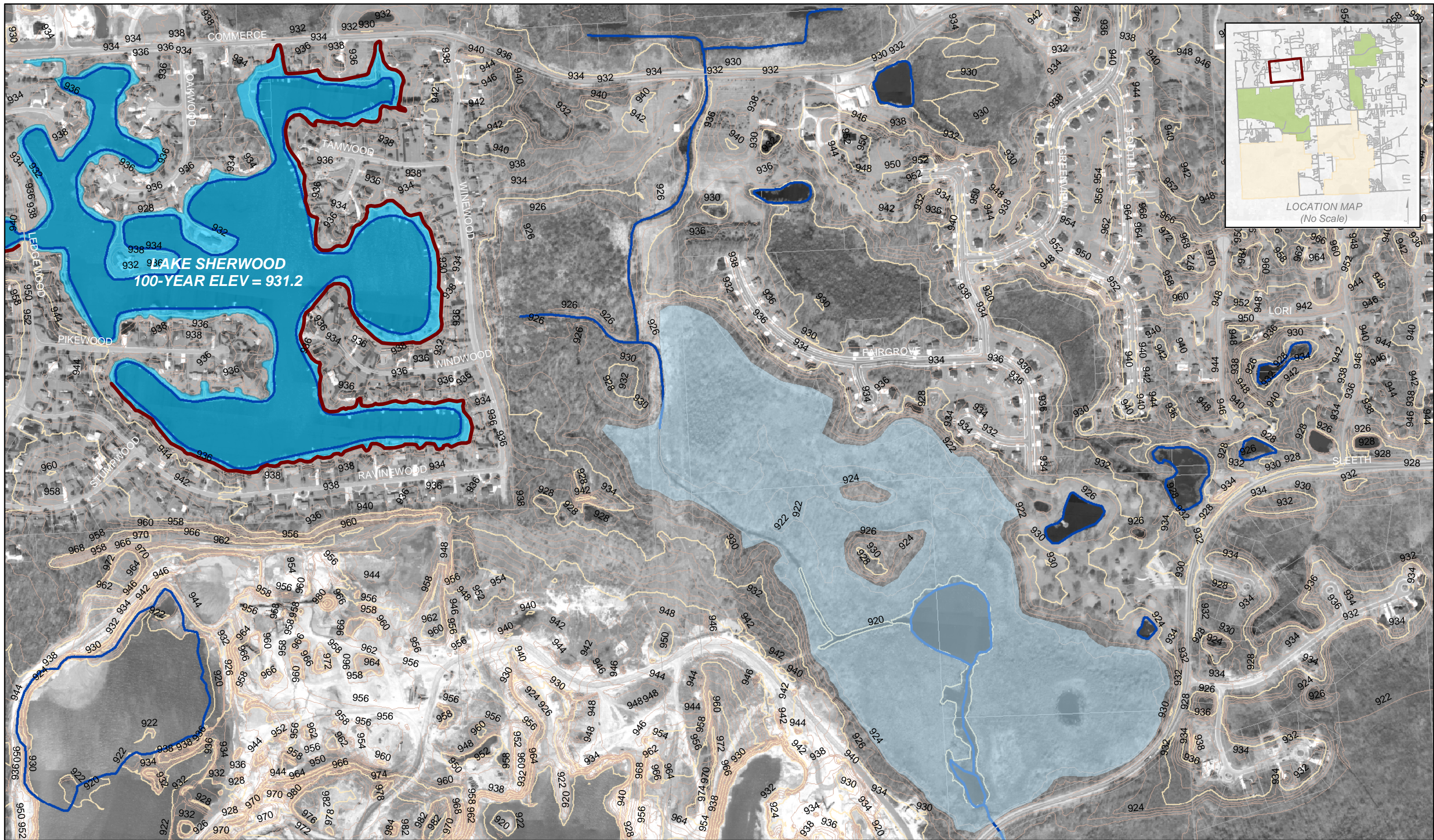
Legend	
	Calculated 100 year Floodplain (1)
	MDEQ Established Floodplains (2)
	Existing Study Cross Sections (FEMA) (3)
	Existing 100-year Floodplain (FEMA) (3)
	Recreational Areas

**NOTES:**

1. The location of the approximate 100 year floodplain has been determined using HEC-RAS, HEC-HMS and ArcView GIS software.
2. In some limited areas, the 100 year floodplain has been established by the MDEQ. These areas are generally associated with subdivision plats.
3. Some areas of the Township have been mapped by FEMA. These elevation have been plotted on 2' contours supplied by Oakland County.



Commerce Township Storm Water Master Plan: Exhibit F2  
 100-year Floodplain Map  
 Lake Sherwood (1" = 500')

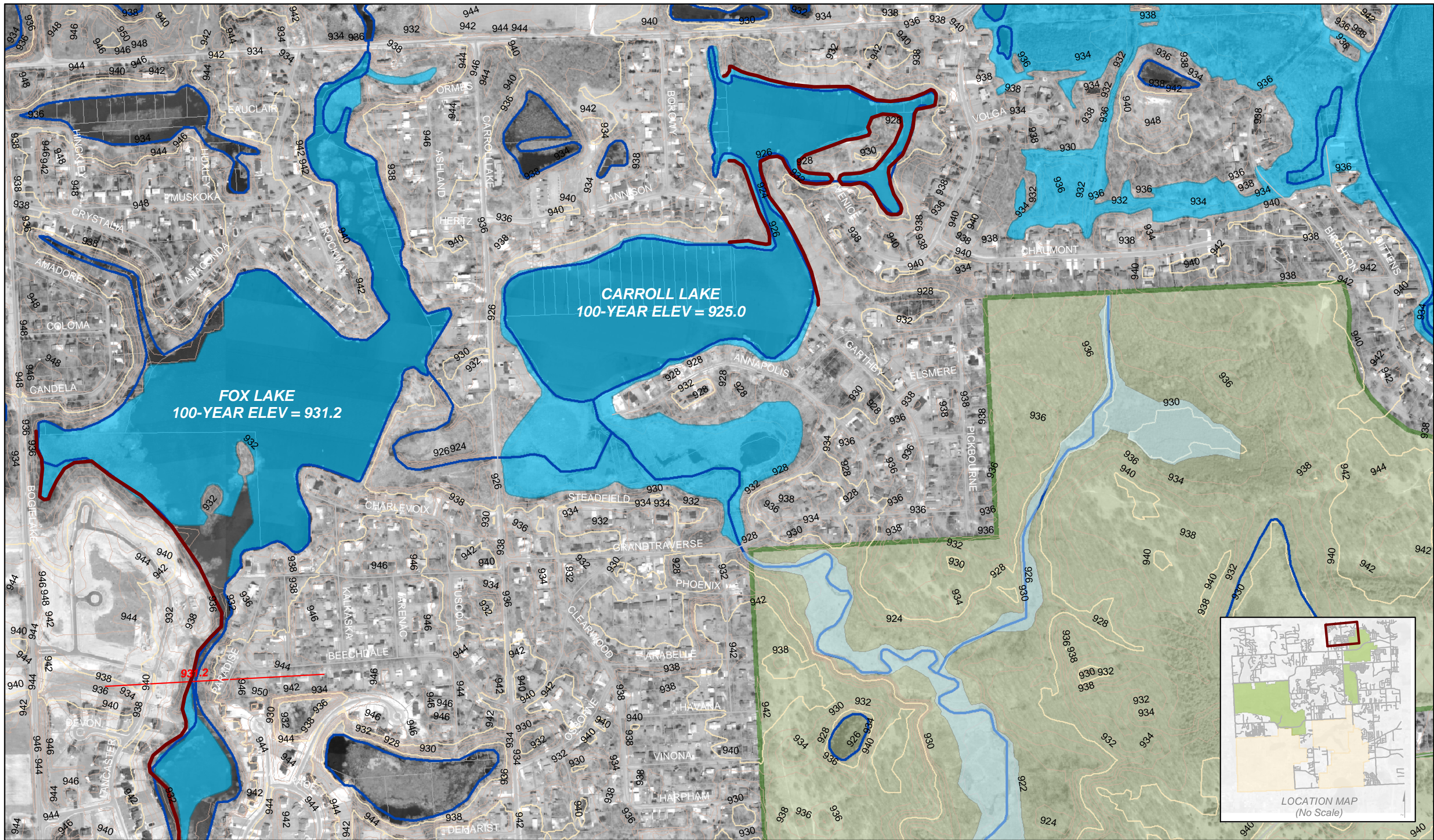


**Legend**

	Calculated 100 year Floodplain (1)
	MDEQ Established Floodplains (2)
	Existing Study Cross Sections (FEMA) (3)
	Existing 100-year Floodplain (FEMA) (3)
	Commerce Streams
	Recreational Areas

- NOTES:**
1. The location of the approximate 100 year floodplain has been determined using HEC-RAS, HEC-HMS and ArcView GIS software.
  2. In some limited areas, the 100 year floodplain has been established by the MDEQ. These areas are generally associated with subdivision plats.
  3. Some areas of the Township have been mapped by FEMA. These elevation have been plotted on 2' contours supplied by Oakland County.





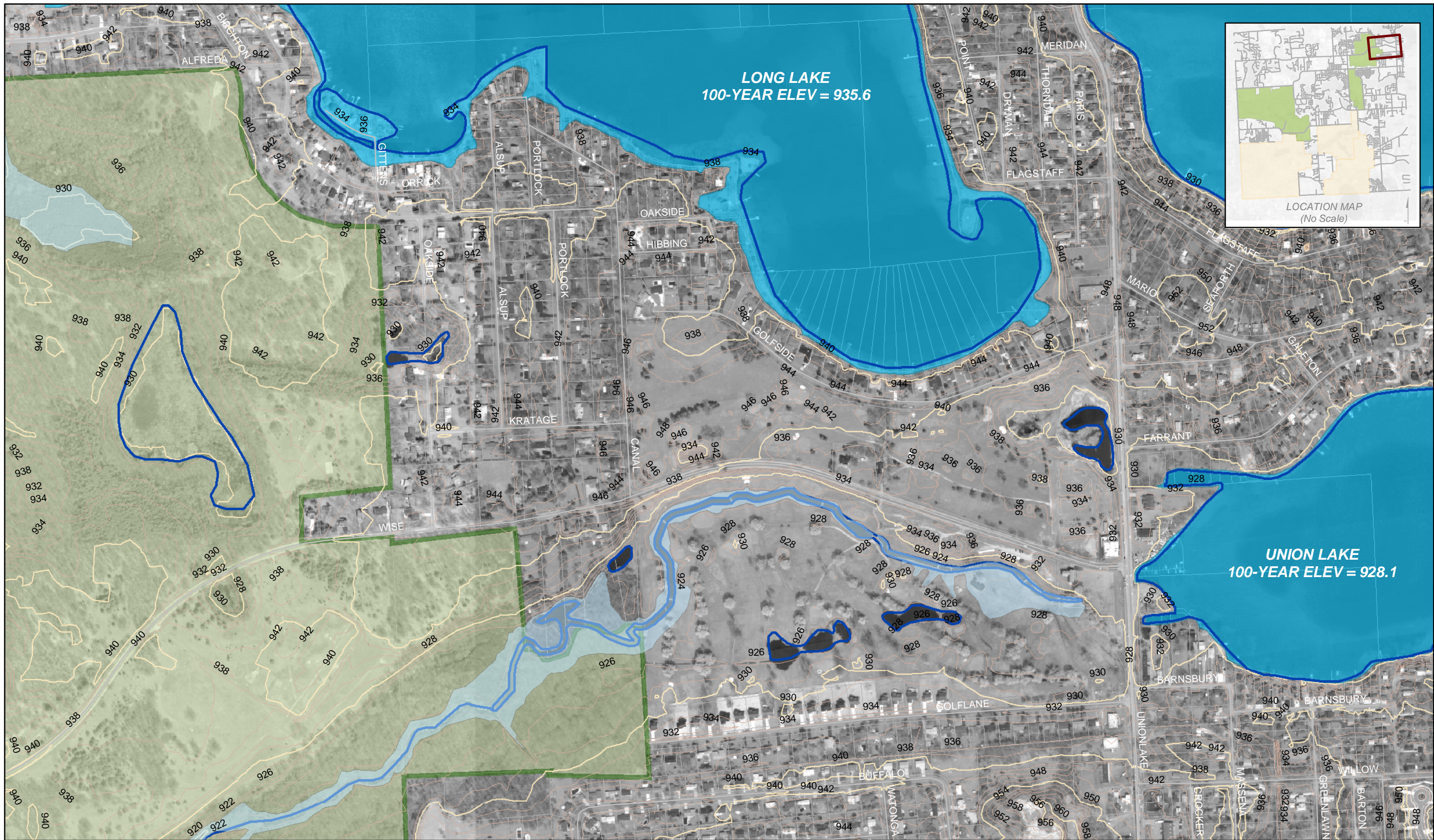
**Legend**

- Calculated 100 year Floodplain (1)
- MDEQ Established Floodplains (2)
- Existing Study Cross Sections (FEMA) (3)
- Existing 100-year Floodplain (FEMA) (3)
- Commerce Streams
- Recreational Areas

**NOTES:**

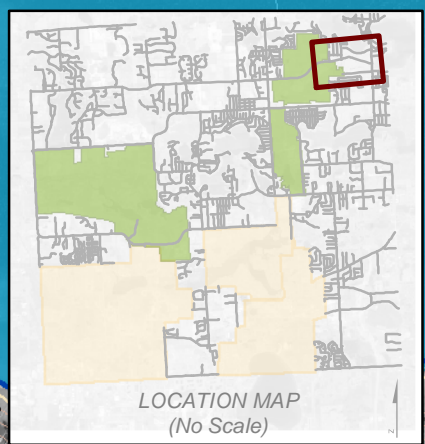
1. The location of the approximate 100 year floodplain has been determined using HEC-RAS, HEC-HMS and ArcView GIS software.
2. In some limited areas, the 100 year floodplain has been established by the MDEQ. These areas are generally associated with subdivision plats.
3. Some areas of the Township have been mapped by FEMA. These elevation have been plotted on 2' contours supplied by Oakland County.





**LONG LAKE**  
100-YEAR ELEV = 935.6

**UNION LAKE**  
100-YEAR ELEV = 928.1



**Legend**

- Calculated 100 year Floodplain (1)
- MDEQ Established Floodplains (2)
- Existing Study Cross Sections (FEMA) (3)
- Existing 100-year Floodplain (FEMA) (3)
- Commerce Streams
- Recreational Areas

**NOTES:**

1. The location of the approximate 100 year floodplain has been determined using HEC-RAS, HEC-HMS and ArcView GIS software.
2. In some limited areas, the 100 year floodplain has been established by the MDEQ. These areas are generally associated with subdivision plats.
3. Some areas of the Township have been mapped by FEMA. These elevation have been plotted on 2' contours supplied by Oakland County.



*Commerce Township Storm Water Master Plan: Exhibit F5  
100-year Floodplain Map  
Hayes Creek (1" = 500')*



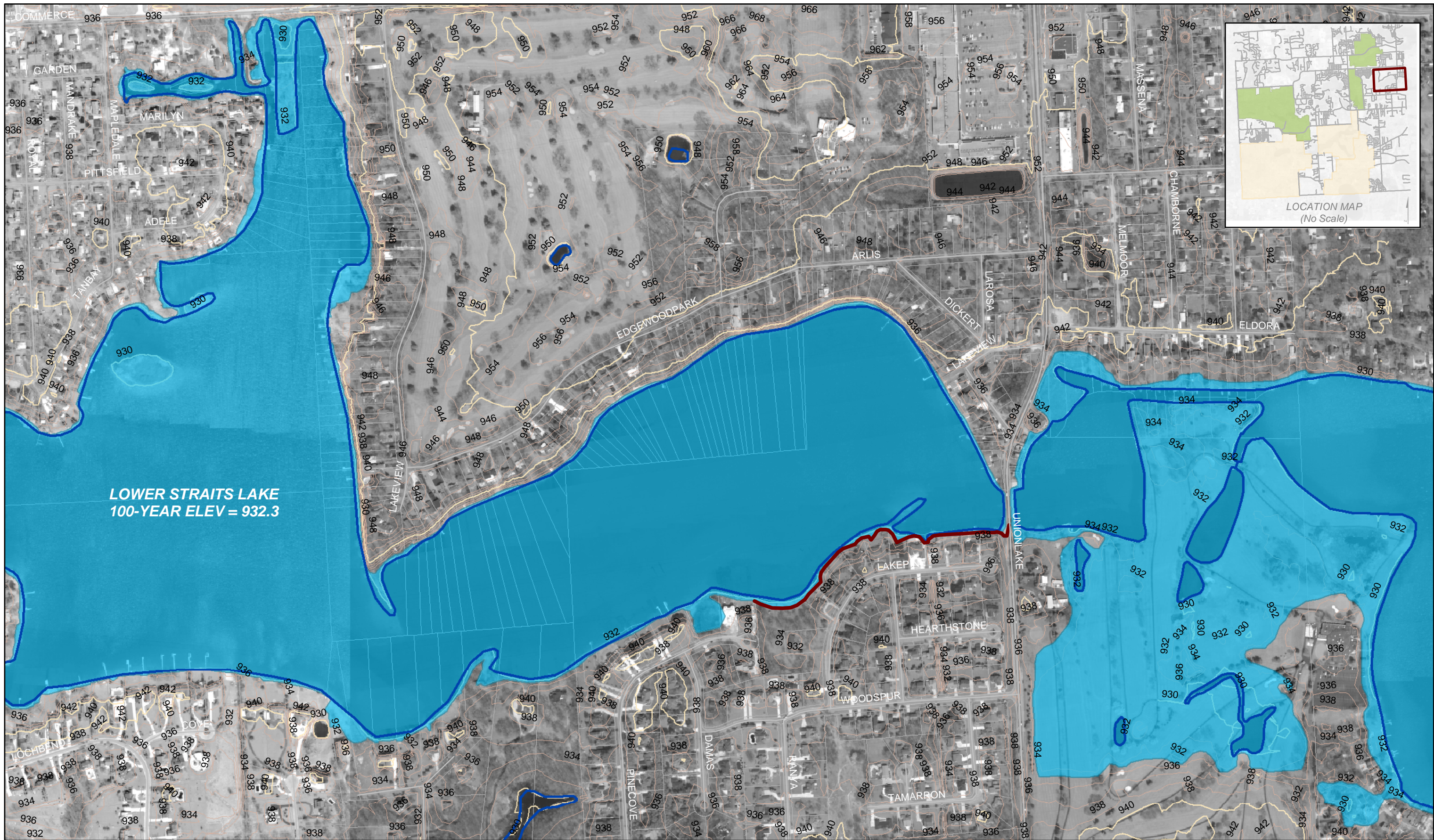
Legend	
	Calculated 100 year Floodplain (1)
	MDEQ Established Floodplains (2)
	Existing Study Cross Sections (FEMA) (3)
	Existing 100-year Floodplain (FEMA) (3)
	Commerce Streams
	Recreational Areas

**NOTES:**

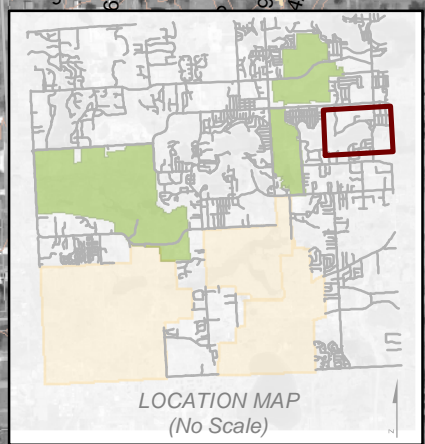
1. The location of the approximate 100 year floodplain has been determined using HEC-RAS, HEC-HMS and ArcView GIS software.
2. In some limited areas, the 100 year floodplain has been established by the MDEQ. These areas are generally associated with subdivision plats.
3. Some areas of the Township have been mapped by FEMA. These elevation have been plotted on 2' contours supplied by Oakland County.



Commerce Township Storm Water Master Plan: Exhibit F6  
 100-year Floodplain Map  
 Huron River / Hayes Creek 2 (1" = 500')



LOWER STRAITS LAKE  
100-YEAR ELEV = 932.3



**Legend**

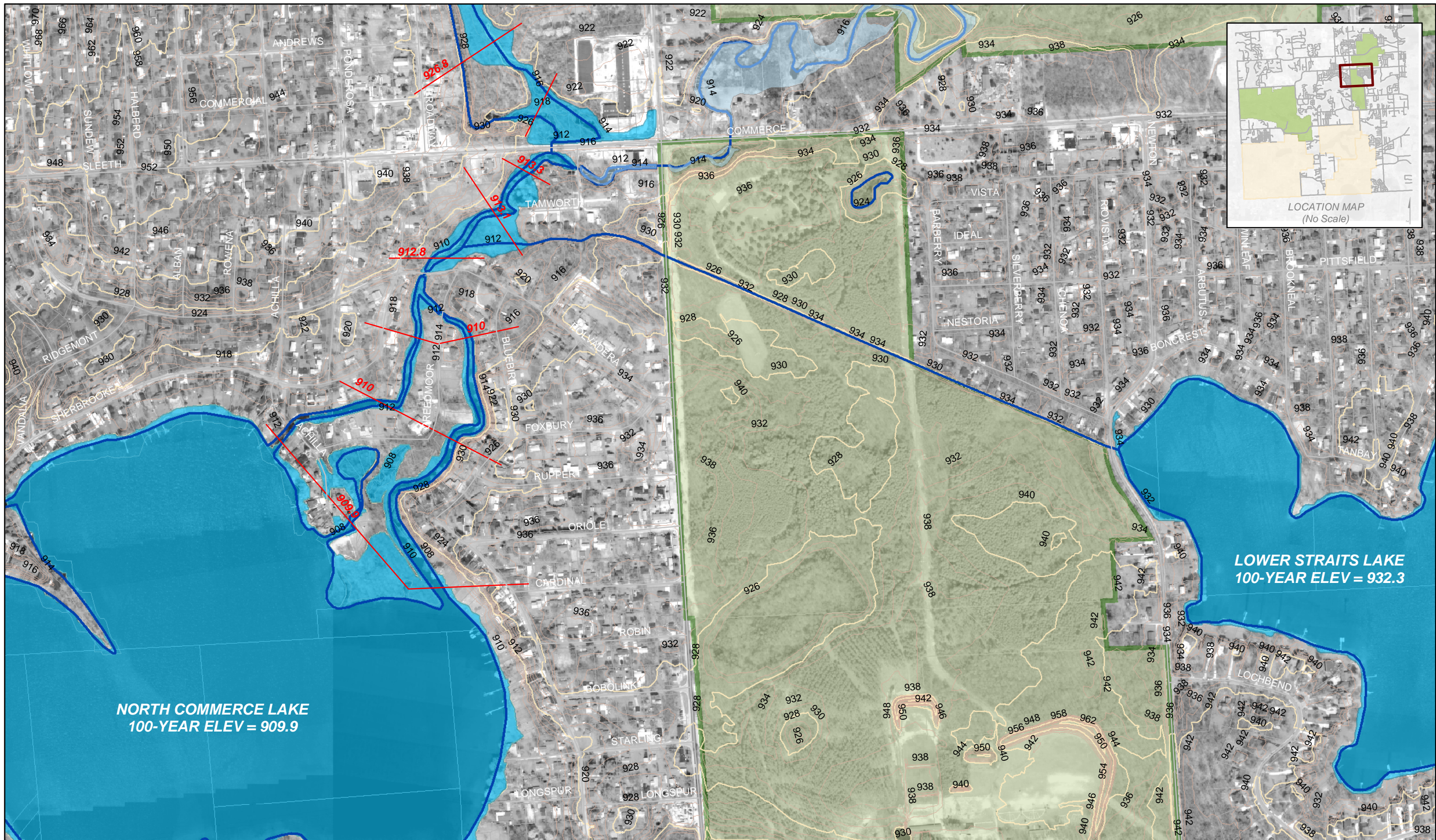
- Calculated 100 year Floodplain (1)
- MDEQ Established Floodplains (2)
- Existing Study Cross Sections (FEMA) (3)
- Existing 100-year Floodplain (FEMA) (3)
- Commerce Streams
- Recreational Areas

**NOTES:**

1. The location of the approximate 100 year floodplain has been determined using HEC-RAS, HEC-HMS and ArcView GIS software.
2. In some limited areas, the 100 year floodplain has been established by the MDEQ. These areas are generally associated with subdivision plats.
3. Some areas of the Township have been mapped by FEMA. These elevation have been plotted on 2' contours supplied by Oakland County.

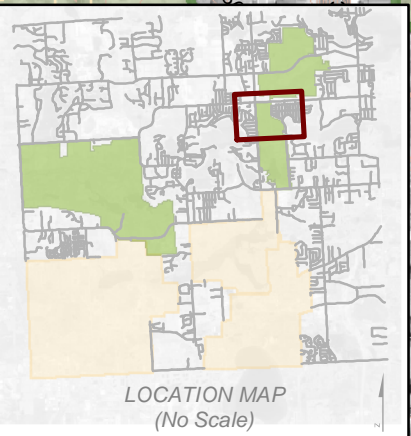






**NORTH COMMERCE LAKE**  
100-YEAR ELEV = 909.9

**LOWER STRAITS LAKE**  
100-YEAR ELEV = 932.3



Legend	
	Calculated 100 year Floodplain (1)
	MDEQ Established Floodplains (2)
	Existing Study Cross Sections (FEMA) (3)
	Existing 100-year Floodplain (FEMA) (3)
	Commerce Streams
	Recreational Areas

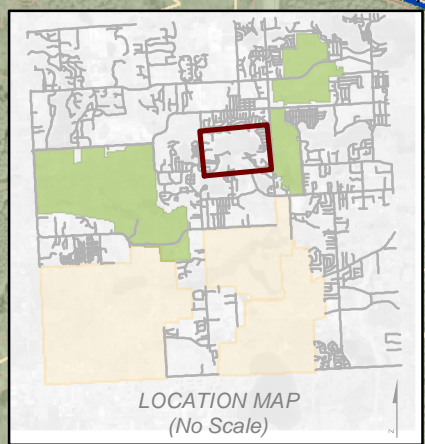
- NOTES:**
1. The location of the approximate 100 year floodplain has been determined using HEC-RAS, HEC-HMS and ArcView GIS software.
  2. In some limited areas, the 100 year floodplain has been established by the MDEQ. These areas are generally associated with subdivision plats.
  3. Some areas of the Township have been mapped by FEMA. These elevation have been plotted on 2' contours supplied by Oakland County.



*Commerce Township Storm Water Master Plan: Exhibit F8*  
*100-year Floodplain Map*  
*Huron River / Lower Straits Lake 2 (1" = 500')*



**NORTH COMMERCE LAKE**  
100-YEAR ELEV = 909.9



**Legend**

- Calculated 100 year Floodplain (1)
- MDEQ Established Floodplains (2)
- Existing 100-year Floodplain (FEMA) (3)
- Existing Study Cross Sections (FEMA) (3)
- Commerce Streams
- Recreational Areas

**NOTES:**

1. The location of the approximate 100 year floodplain has been determined using HEC-RAS, HEC-HMS and ArcView GIS software.
2. In some limited areas, the 100 year floodplain has been established by the MDEQ. These areas are generally associated with subdivision plats.
3. Some areas of the Township have been mapped by FEMA. These elevation have been plotted on 2' contours supplied by Oakland County.



*Commerce Township Storm Water Master Plan: Exhibit F9  
100-year Floodplain Map  
North Commerce Lake (1" = 500')*



**NORTH COMMERCE LAKE**  
100-YEAR ELEV = 909.9

**BASS LAKE**  
100-YEAR ELEV = 919.4

**SOUTH COMMERCE LAKE**  
100-YEAR ELEV = 909.9

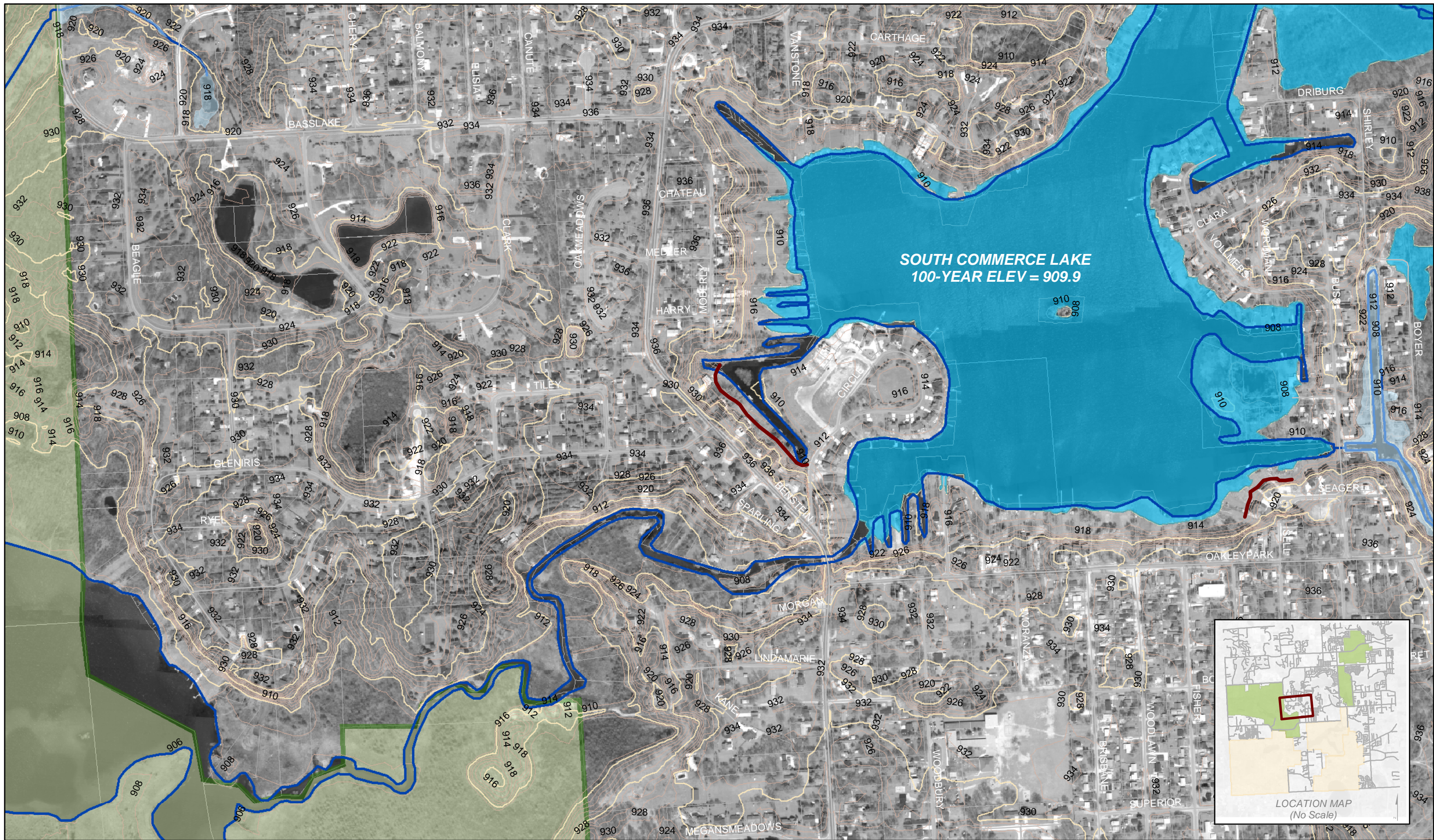
**Legend**

	Calculated 100 year Floodplain (1)
	MDEQ Established Floodplains (2)
	Existing Study Cross Sections (FEMA) (3)
	Existing 100-year Floodplain (FEMA) (3)
	Commerce Streams
	Recreational Areas

- NOTES:**
1. The location of the approximate 100 year floodplain has been determined using HEC-RAS, HEC-HMS and ArcView GIS software.
  2. In some limited areas, the 100 year floodplain has been established by the MDEQ. These areas are generally associated with subdivision plats.
  3. Some areas of the Township have been mapped by FEMA. These elevation have been plotted on 2' contours supplied by Oakland County.



*Commerce Township Storm Water Master Plan: Exhibit F10  
100-year Floodplain Map  
Sleeth Road Drain (1" = 500')*



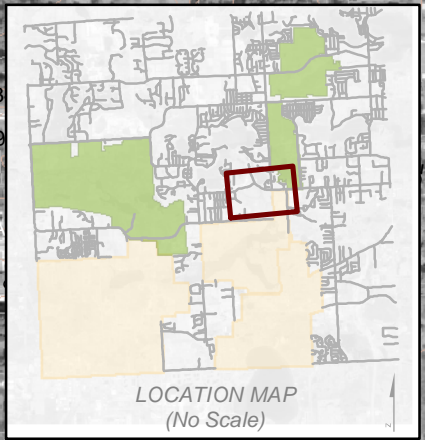
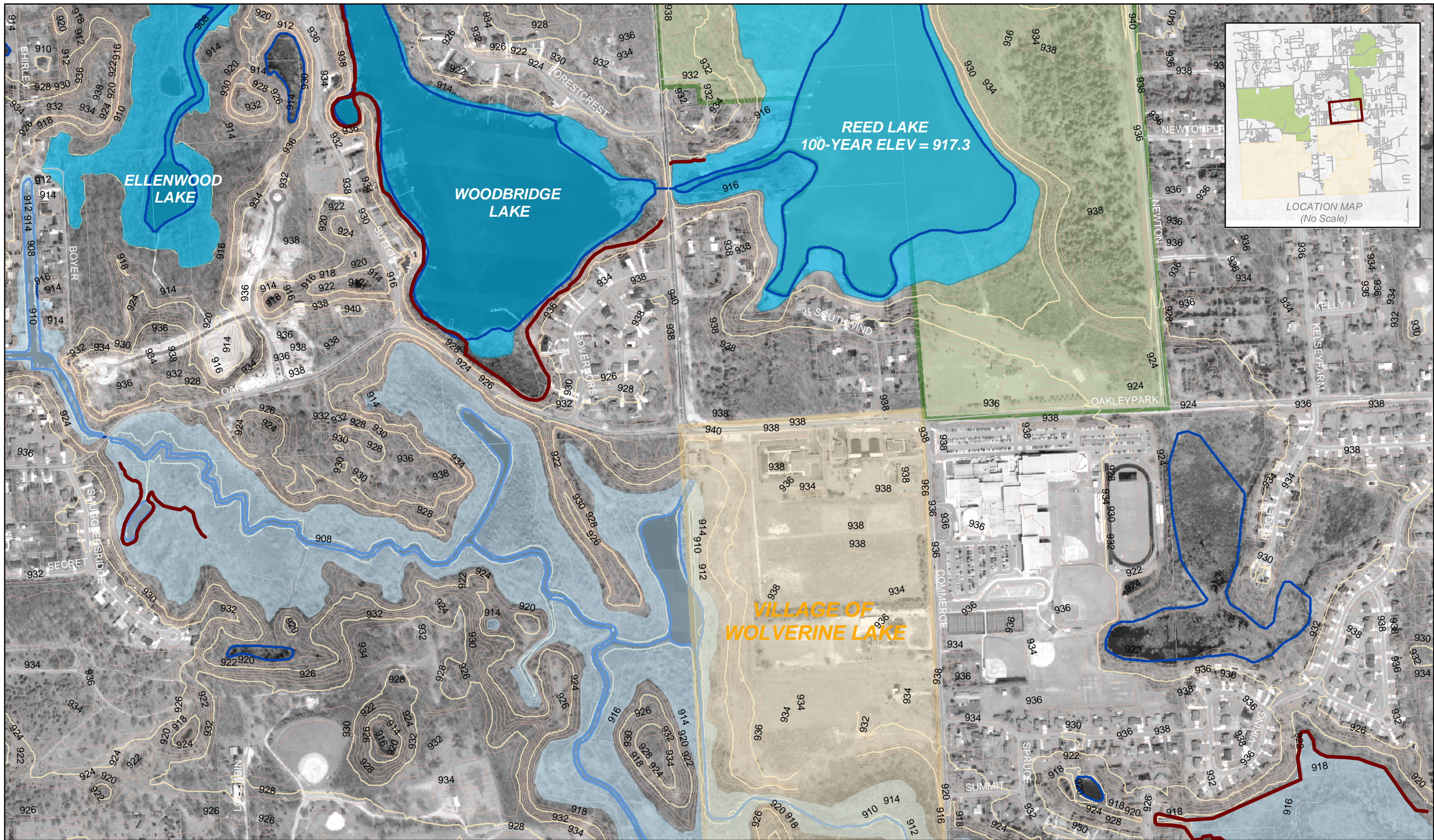
Legend	
	Calculated 100 year Floodplain (1)
	MDEQ Established Floodplains (2)
	Existing Study Cross Sections (FEMA) (3)
	Existing 100-year Floodplain (FEMA) (3)
	Commerce Streams
	Recreational Areas

**NOTES:**

1. The location of the approximate 100 year floodplain has been determined using HEC-RAS, HEC-HMS and ArcView GIS software.
2. In some limited areas, the 100 year floodplain has been established by the MDEQ. These areas are generally associated with subdivision plats.
3. Some areas of the Township have been mapped by FEMA. These elevation have been plotted on 2' contours supplied by Oakland County.



Commerce Township Storm Water Master Plan: Exhibit F11  
 100-year Floodplain Map  
 South Commerce Lake (1" = 500')



**Legend**

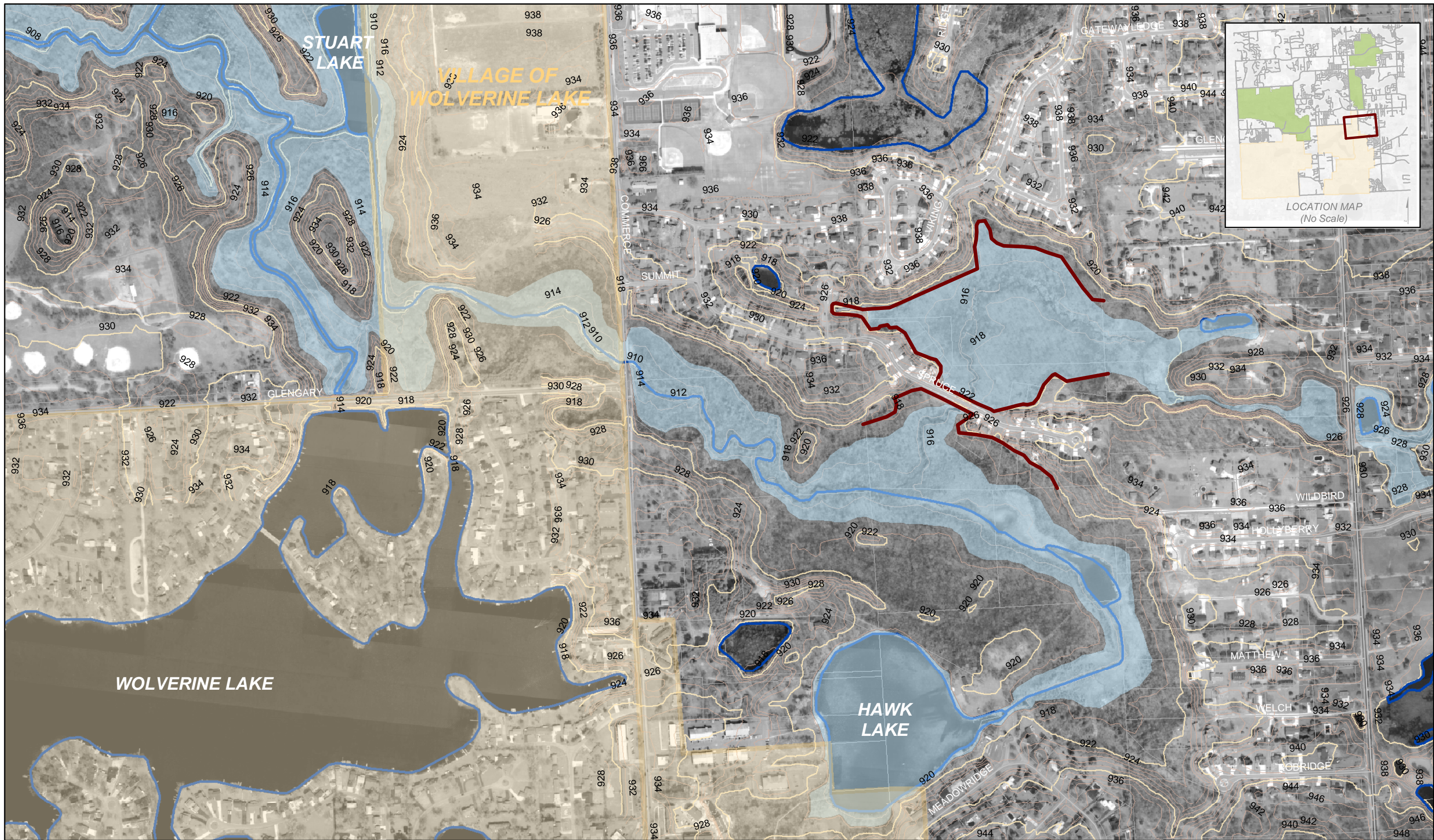
	Calculated 100 year Floodplain (1)
	MDEQ Established Floodplains (2)
	Existing Study Cross Sections (FEMA) (3)
	Existing 100-year Floodplain (FEMA) (3)
	Commerce Streams
	Recreational Areas

**NOTES:**

1. The location of the approximate 100 year floodplain has been determined using HEC-RAS, HEC-HMS and ArcView GIS software.
2. In some limited areas, the 100 year floodplain has been established by the MDEQ. These areas are generally associated with subdivision plats.
3. Some areas of the Township have been mapped by FEMA. These elevation have been plotted on 2' contours supplied by Oakland County.



Commerce Township Storm Water Master Plan: Exhibit F12  
100-year Floodplain Map  
Reed Lake (1" = 500')



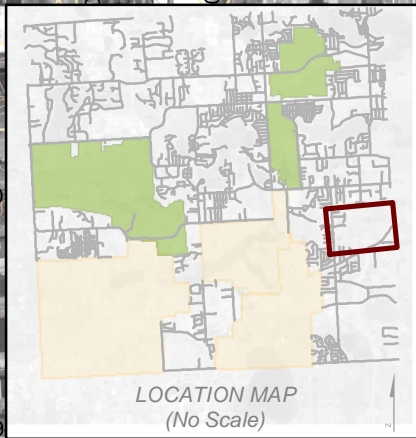
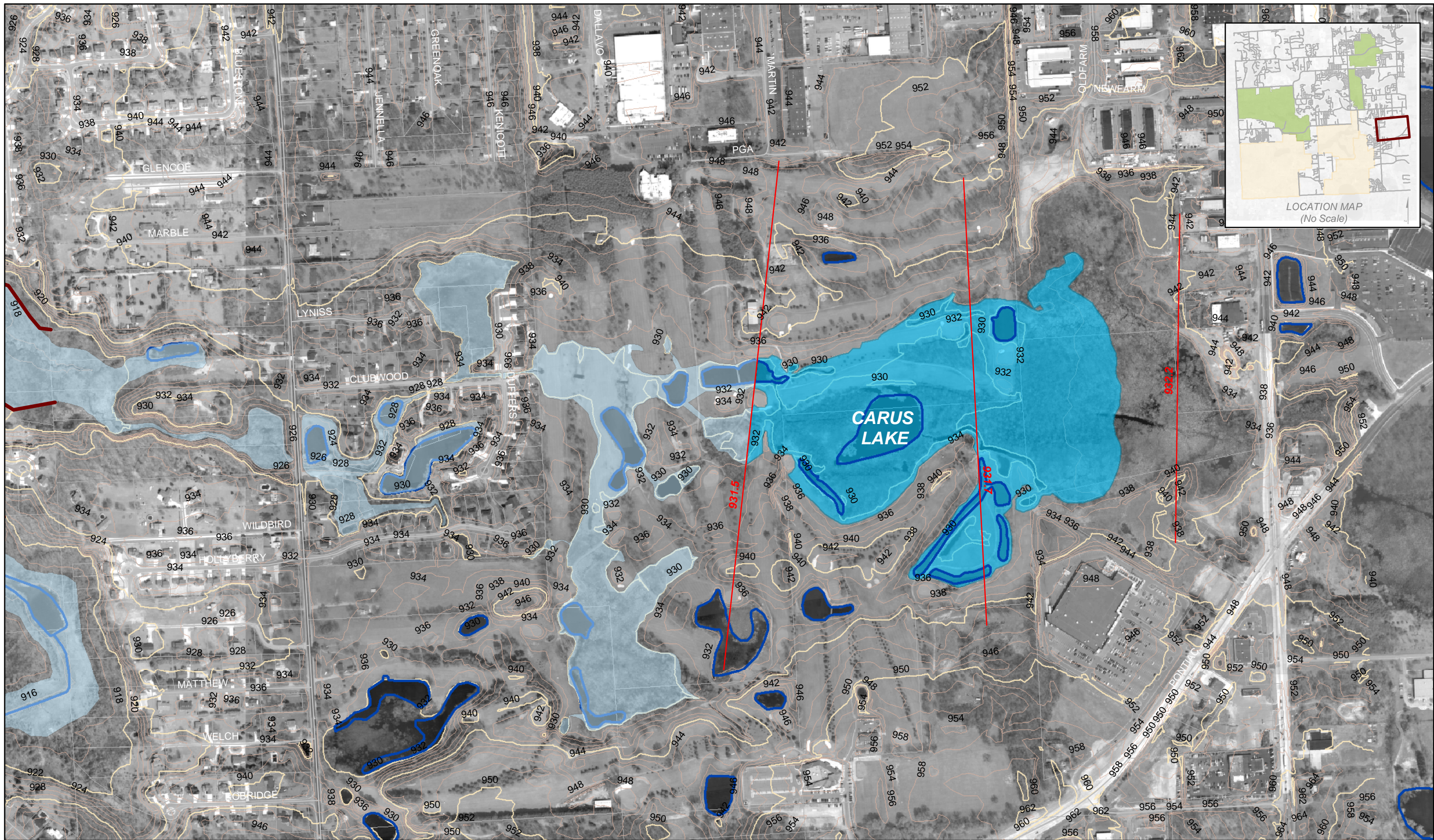
Legend	
	Calculated 100 year Floodplain (1)
	MDEQ Established Floodplains (2)
	Existing Study Cross Sections (FEMA) (3)
	Existing 100-year Floodplain (FEMA) (3)
	Commerce Streams
	Recreational Areas

**NOTES:**

1. The location of the approximate 100 year floodplain has been determined using HEC-RAS, HEC-HMS and ArcView GIS software.
2. In some limited areas, the 100 year floodplain has been established by the MDEQ. These areas are generally associated with subdivision plats.
3. Some areas of the Township have been mapped by FEMA. These elevation have been plotted on 2' contours supplied by Oakland County.



Commerce Township Storm Water Master Plan: Exhibit F13  
 100-year Floodplain Map  
 Hawk Lake (1" = 500')



**Legend**

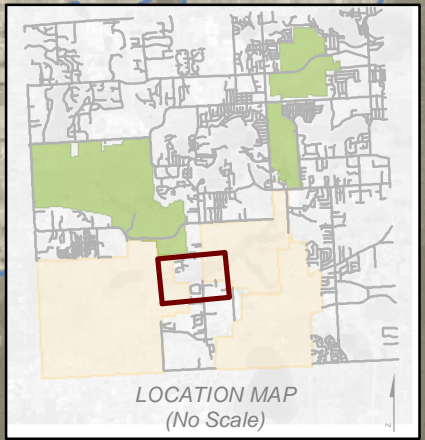
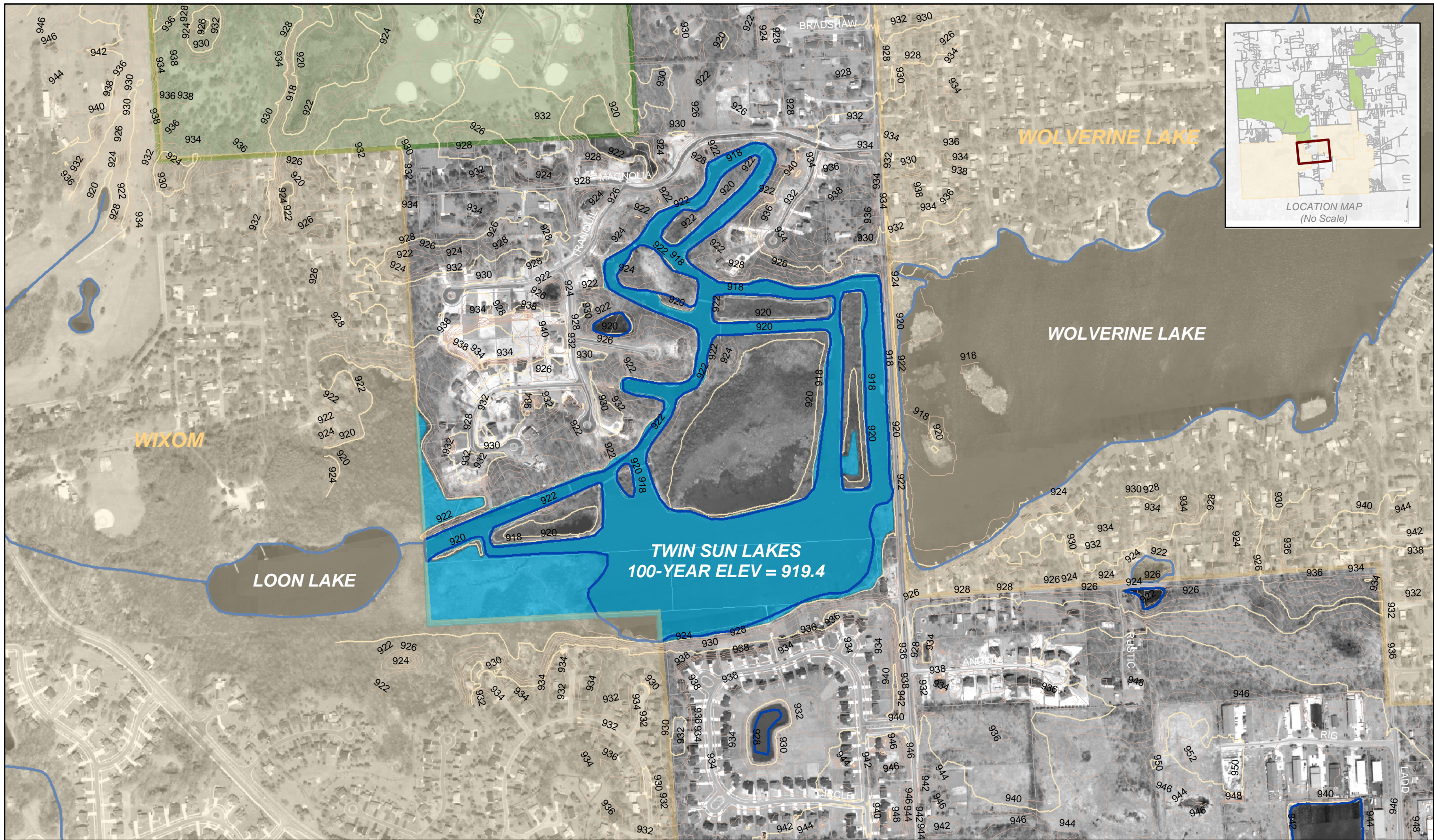
- Calculated 100 year Floodplain (1)
- MDEQ Established Floodplains (2)
- Existing Study Cross Sections (FEMA) (3)
- Existing 100-year Floodplain (FEMA) (3)
- Commerce Streams
- Recreational Areas

**NOTES:**

1. The location of the approximate 100 year floodplain has been determined using HEC-RAS, HEC-HMS and ArcView GIS software.
2. In some limited areas, the 100 year floodplain has been established by the MDEQ. These areas are generally associated with subdivision plats.
3. Some areas of the Township have been mapped by FEMA. These elevation have been plotted on 2' contours supplied by Oakland County.



Commerce Township Storm Water Master Plan: Exhibit F14  
 100-year Floodplain Map  
 Carus Lake (1" = 500')



**Legend**

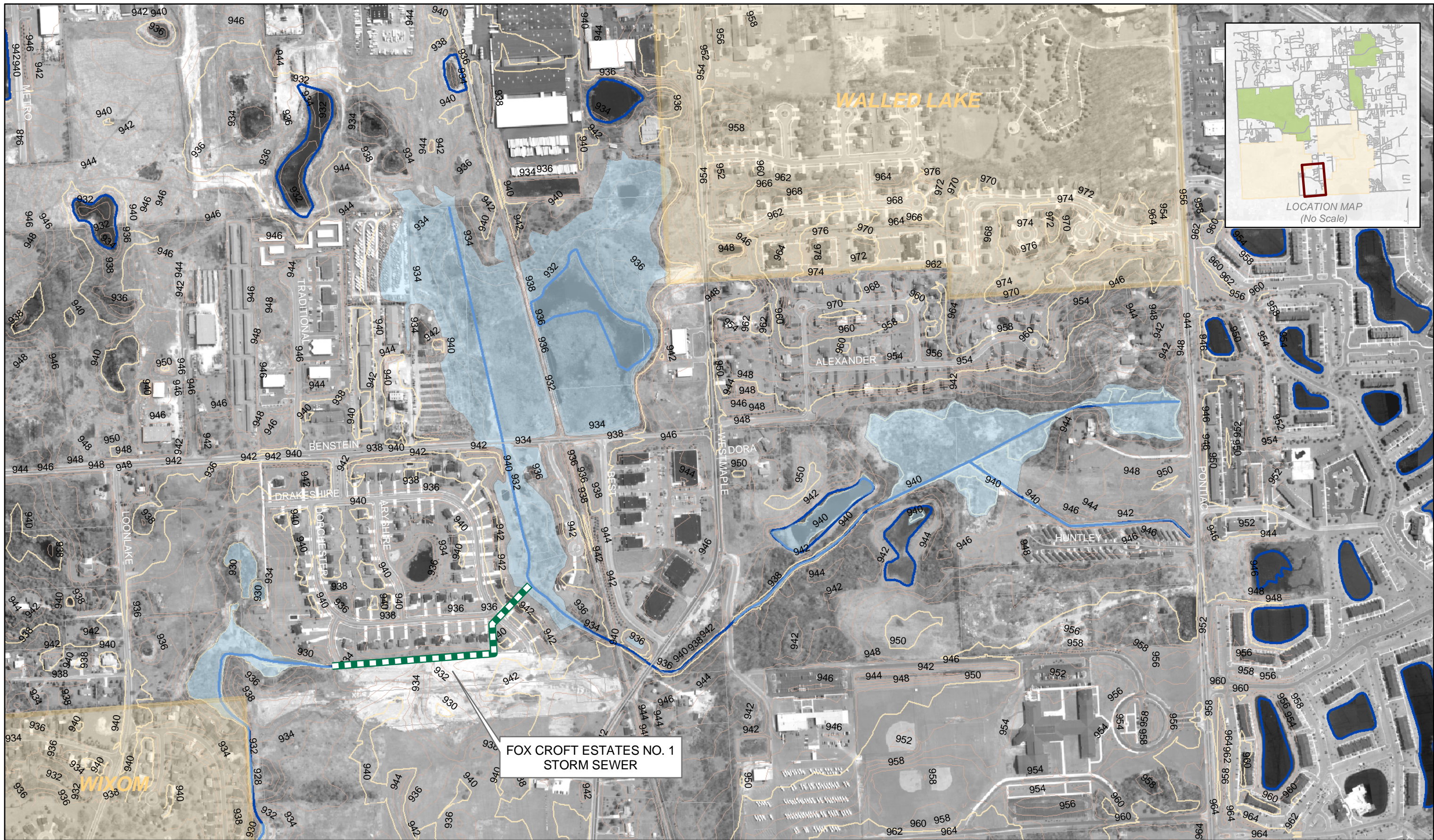
	Calculated 100 year Floodplain (1)
	MDEQ Established Floodplains (2)
	Existing Study Cross Sections (FEMA) (3)
	Existing 100-year Floodplain (FEMA) (3)
	Commerce Streams
	Recreational Areas

- NOTES:**
1. The location of the approximate 100 year floodplain has been determined using HEC-RAS, HEC-HMS and ArcView GIS software.
  2. In some limited areas, the 100 year floodplain has been established by the MDEQ. These areas are generally associated with subdivision plats.
  3. Some areas of the Township have been mapped by FEMA. These elevation have been plotted on 2' contours supplied by Oakland County.



Commerce Township Storm Water Master Plan: Exhibit F15  
 100-year Floodplain Map  
 Twin Sun Lakes (1" = 500')

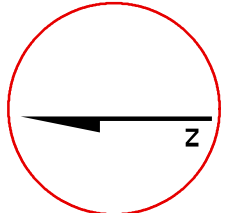




**FOX CROFT ESTATES NO. 1  
STORM SEWER**

Legend	
	Calculated 100 year Floodplain (1)
	MDEQ Established Floodplains (2)
	Existing Study Cross Sections (FEMA) (3)
	Existing 100-year Floodplain (FEMA) (3)
	Commerce Streams
	Recreational Areas

- NOTES:**
1. The location of the approximate 100 year floodplain has been determined using HEC-RAS, HEC-HMS and ArcView GIS software.
  2. In some limited areas, the 100 year floodplain has been established by the MDEQ. These areas are generally associated with subdivision plats.
  3. Some areas of the Township have been mapped by FEMA. These elevation have been plotted on 2' contours supplied by Oakland County.



Commerce Township Storm Water Master Plan: Exhibit F16  
100-year Floodplain Map  
Taylor-Ladd Drain (1" = 500')